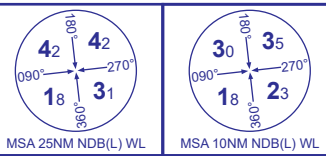


PROCEDURE CHART - ICAO

WALNEY RNP RWY 35
(ACFT CAT A,B)



| | | |
|--------------|--------------------|---|
| AFIS 118.080 | WALNEY INFORMATION | AD ELEVATION 44 |
| | | THR ELEVATION 44 |
| | | OBSTACLE ELEVATION 1230 AMSL (1186) (ABOVE THR) |
| | | BEARINGS ARE MAGNETIC |

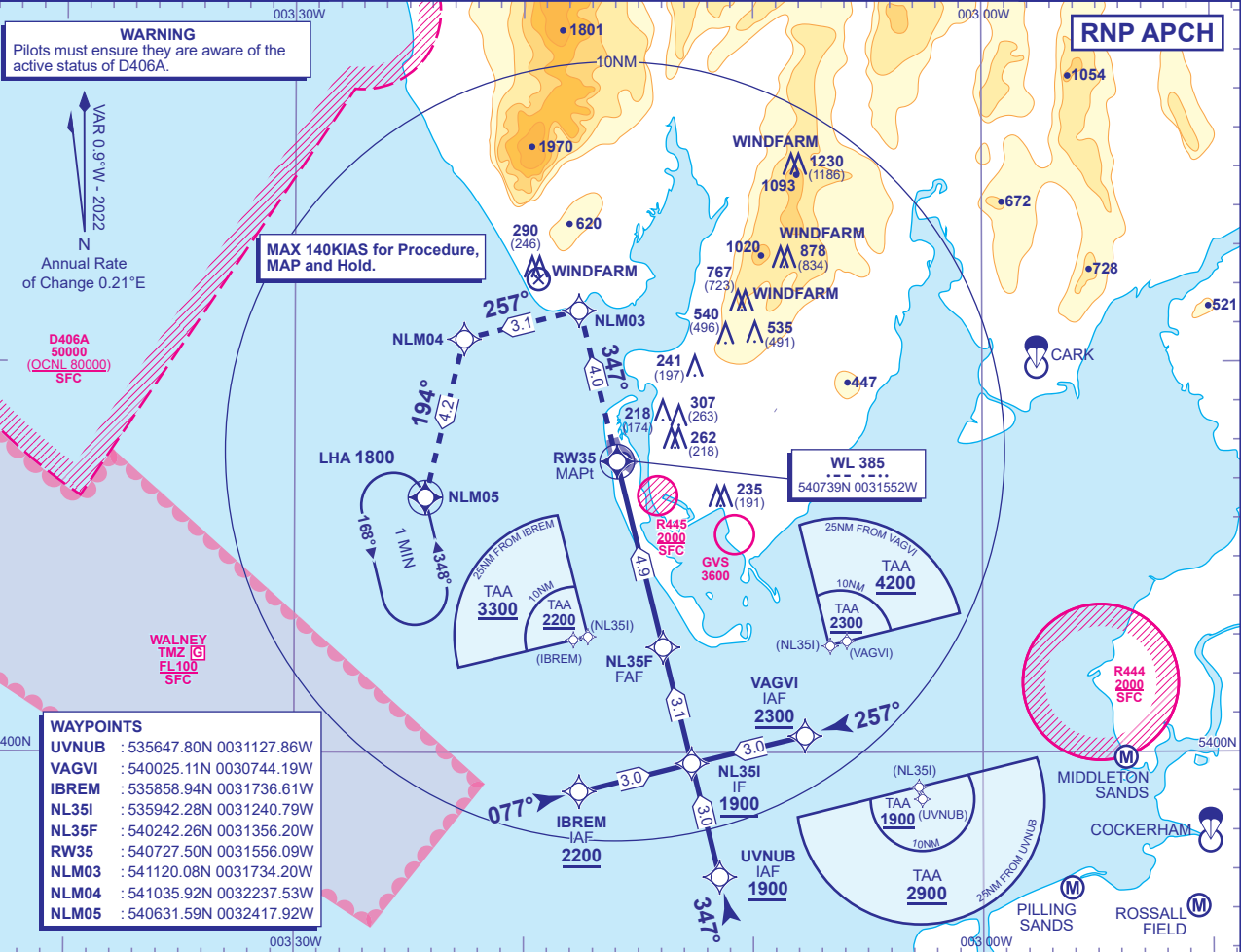
MIN TEMP -10°C
TRANSITION ALTITUDE 3000

WARNING
Pilots must ensure they are aware of the active status of D406A.

VAR 0.9°W - 2022
Annual Rate of Change 0.21°E

MAX 140KIAS for Procedure, MAP and Hold.

RNP APCH



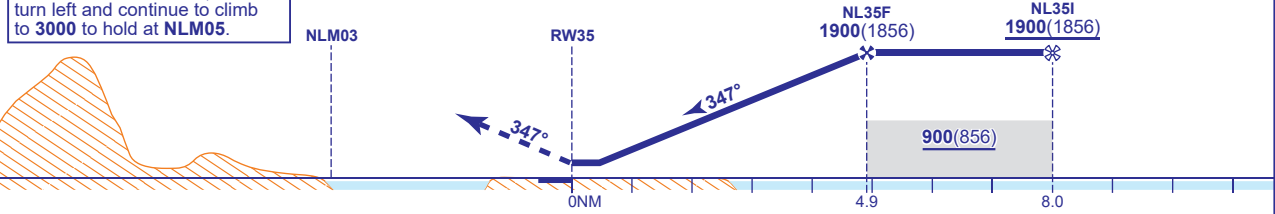
WAYPOINTS

| | |
|-------|--------------------------|
| UVNUB | : 535647.80N 0031127.86W |
| VAGVI | : 540025.11N 0030744.19W |
| IBREM | : 535858.94N 0031736.61W |
| NL35I | : 535942.28N 0031240.79W |
| NL35F | : 540242.26N 0031356.20W |
| RW35 | : 540727.50N 0031556.09W |
| NLM03 | : 541120.08N 0031734.20W |
| NLM04 | : 541035.92N 0032237.53W |
| NLM05 | : 540631.59N 0032417.92W |

RECOMMENDED PROFILE VNAV - VERTICAL PATH ANGLE 3.5° (LNAV 6.1% 372FT/NM)

| | | | | |
|------------|------------|------------|----------|----------|
| NM to RW35 | 4 | 3 | 2 | 1 |
| ALT(HGT) | 1570(1526) | 1200(1156) | 830(786) | 450(406) |

MAPt (LNAV): RW35
Climb straight ahead to NLM03, then turn left to NLM04, then turn left and continue to climb to 3000 to hold at NLM05.



| Aircraft Category | A | B | Rate of descent | G/S KT | 160 | 140 | 120 | 100 | 80 |
|--------------------|------------|----------|-----------------|--------|-----|-----|-----|-----|-----|
| OCA (OCH) | LNAV | 430(386) | 430(386) | FT/MIN | 990 | 870 | 740 | 620 | 500 |
| VM(C)OCA (OCH AAL) | Total Area | 700(656) | 700(656) | | | | | | |

NOTE Use of this procedure is strictly PPR from the aerodrome operator.

CHANGE (1/25): NOTE ADDED.